

Let's go Tidepooling!

You will need

Bucket or other container
Identification guide (see other side)
Rubber boots or water shoes
Camera
Net (optional)

- Make sure you have an adult with you and have checked the weather and tides. Follow the Seashore Code (see right).
- The best time to go is low tide—you can check the tide times for different areas [here](#).
- Put some seawater in your containers.
- Use your hands or a net to carefully lift sea creatures. Don't pull attached animals off of rocks or squeeze soft bodied animals.
- Look under seaweed and rocks but be sure to put them back where you found them.
- Identify your animals using your identification guides.
- Take only photographs! Put all the animals back where you found them before you leave.
- You can get help with identifications by uploading your photo records to [iNaturalist](#)



Good spots for tidepooling in the Quoddy Region include Indian Point, St Andrews; Connors Bros. Pea Point Nature Preserve, Blacks Harbour (below); and Green's Point, L'Etete (above).



Image: Daniella Snepkova

Find out more at <https://dive deeper.site/>

The Seashore Code

Let someone know where you are. Make sure you know what the weather and tides will be like.



Walk carefully over rocks to avoid damage to plants and animals.

Do not take living plants or animals home. Take only photographs.



Take your litter home with you!

Report anything unusual that you find but do not touch if you are not sure it is safe.



Treat all living things with respect and replace any stone or seaweed exactly as you found it.



www.mba.ac.uk

© The Marine Biological Association all rights reserved



HUNTSMAN

Marine Science Centre

A guide to the common seaweeds and invertebrates
found on the intertidal zone around St. Andrews, NB



SCIENCE
ODYSSEY

506.529.1200
www.huntsmanmarine.ca



NSERC
CRSNG



Sponge



Scale Worm



Blue Mussel



Soft-shell Clam



Smooth Periwinkle



Periwinkle (*invasive*)



Dogwinkle



Northern Moon Snail



Barnacle



Side Swimmer



Green Crab (*invasive*)



Green Sea Urchin



Sand Dollar



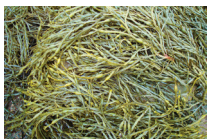
Sea Star



Sea Vase (*invasive*)



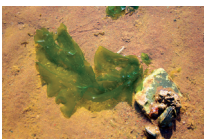
Eel Grass



Knotted Wrack



Rockweed



Sea Lettuce



Irish Moss

Look under the rocks and seaweed to discover this hidden world,
BUT always carefully replace what you have disturbed.
Enjoy your beachcombing! Take only pictures. Leave only footprints.

For more information visit the Huntsman Marine Science Centre
1 Lower Campus Road, St. Andrews, New Brunswick